

# C O S M O P O L I T A N

# Home

## *Grand Rapids*

the  
**urbane home**  
by Diephuis Builders, Inc.

Kitchen Trends 2000

**RENOVATE**  
GRAND RAPIDS  
Premiere Issue Inside

Sept/Oct 2000 \$3.00



0 74470 74961 5 09  
a NEW VIEW publication



by Stelle Sloomaker  
photography by Dave Leale

# the urbane home

Today's urbane home marries technology to tradition, practiced craftsmanship to late-breaking techniques and materials, and elegance to comfort. Its fabrication blends with and supports the natural elements of its setting. It provides the perfect habitat for cocooning, an enchanting setting for entertaining, and a practical layout for launching a busy lifestyle. Today's urbane home is right here and *Grand Rapids Cosmopolitan Home* is offering you a peek.

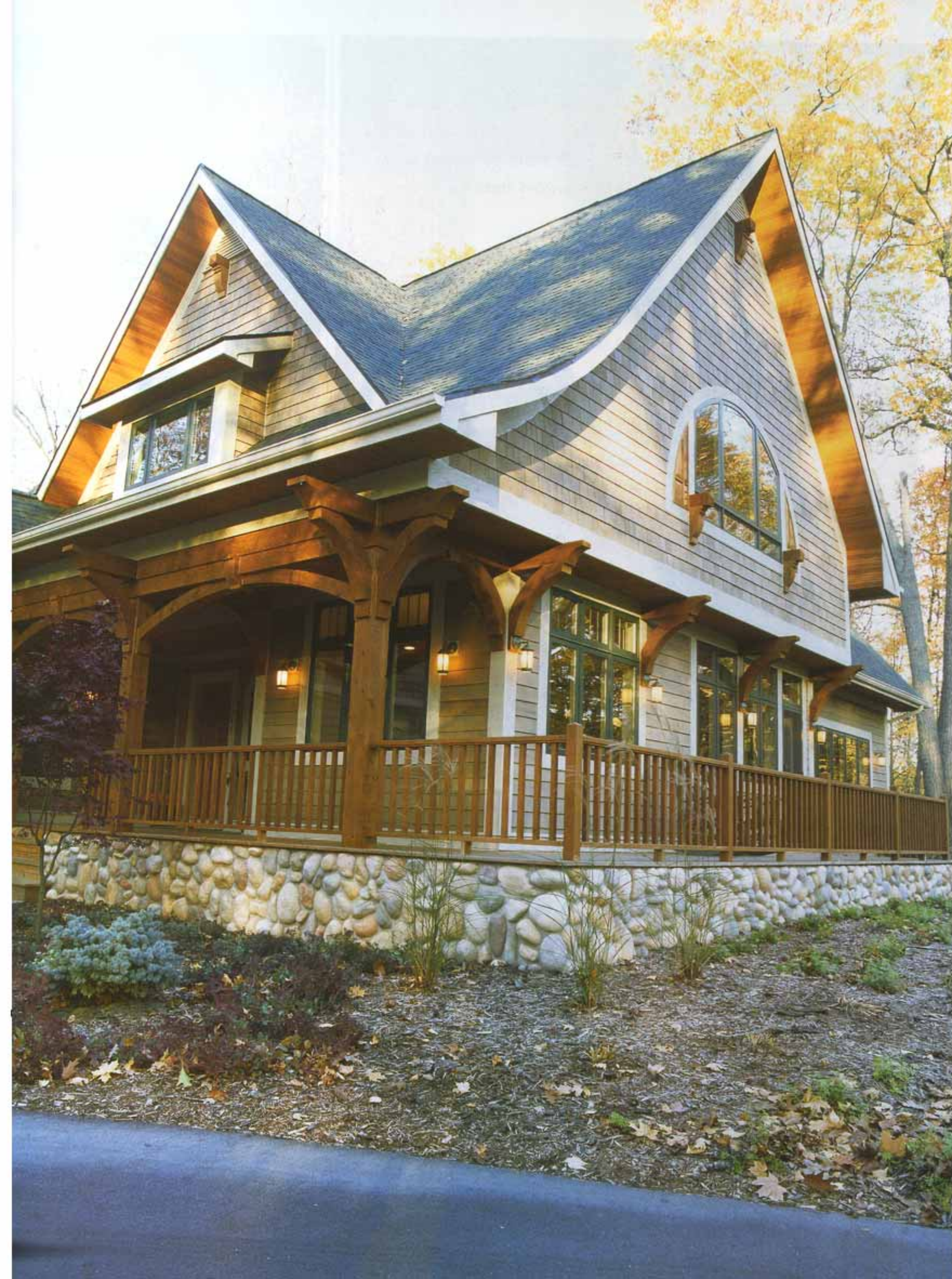
"It turned out beautiful — a lot of effort was put into the home's exterior," says Dan Diephuis, Diephuis Builders Inc., who worked with a plan that was previously purchased by the homeowners. "Notice the way the roof hugs the house; this created some interesting challenges on the second floor. We redesigned the headroom and functional space so it was not lost to the steep angles. Dealing with the very high, steep roof took special equipment and handling."

The exterior's allure can also be credited to the use of various natural cedar components. The main portion of the house features clear bevel cedar siding while the gables sport cedar shake shingles. Michigan PreStain finished the cedar with a custom color stain off-site in a manufacturing setting. This new technique of finishing this age-old building material cuts costs and improves durability.

"The result is a nicer stain job, more evenly applied. It's prettier and longer lasting," says Greg Troutt, president of Michigan PreStain. "This way, we can stain the back of the wood, as recommended. This makes the cedar and the finish last a lot longer. It also saves money. We can supply the wood and the staining service all in one package and save the homeowner \$1,000 to \$2,000 in process."

Both cedar and beaded fir figures into the dramatic overhang soffits and porch ceiling. This old-fashioned look adds the warmth and character of an established homestead to the newly constructed home. Heavy eight-by-eight cedar timbers define the friendly front porch; cedar handrails and decking complete the pleasant picture.

The exterior's allure can be credited to the use of various cedar components while the steep-roofed, cottage design creates very unique interior spaces.





*The colors chosen throughout establish the inviting aura of warmth and friendliness. Light neutrals enlivened with warm browns, mossy greens and white wood trims go warm with touches of red and other muted hues.*



"Cedar will last 100 years when properly maintained. It's a centuries-proven product that has stood the test of time," according to Troutt. "You can be so much more creative with cedar. You can mix and match a lot of different components to develop your own style in your home. Man-made exterior sidings limit the possibilities. Most sidings have fifteen colors; we have done 15,000 and possibilities are infinite."

The steep-roofed, cottage design creates unique interior spaces. Christine DiMaria, of Rock Kauffman Design, put together an interior that enabled these spaces to flow, from one to another, in perfect harmony. "I like flow in my houses. That's really important to me. When you repeat color and textures, that leads you through a house," DiMaria says.

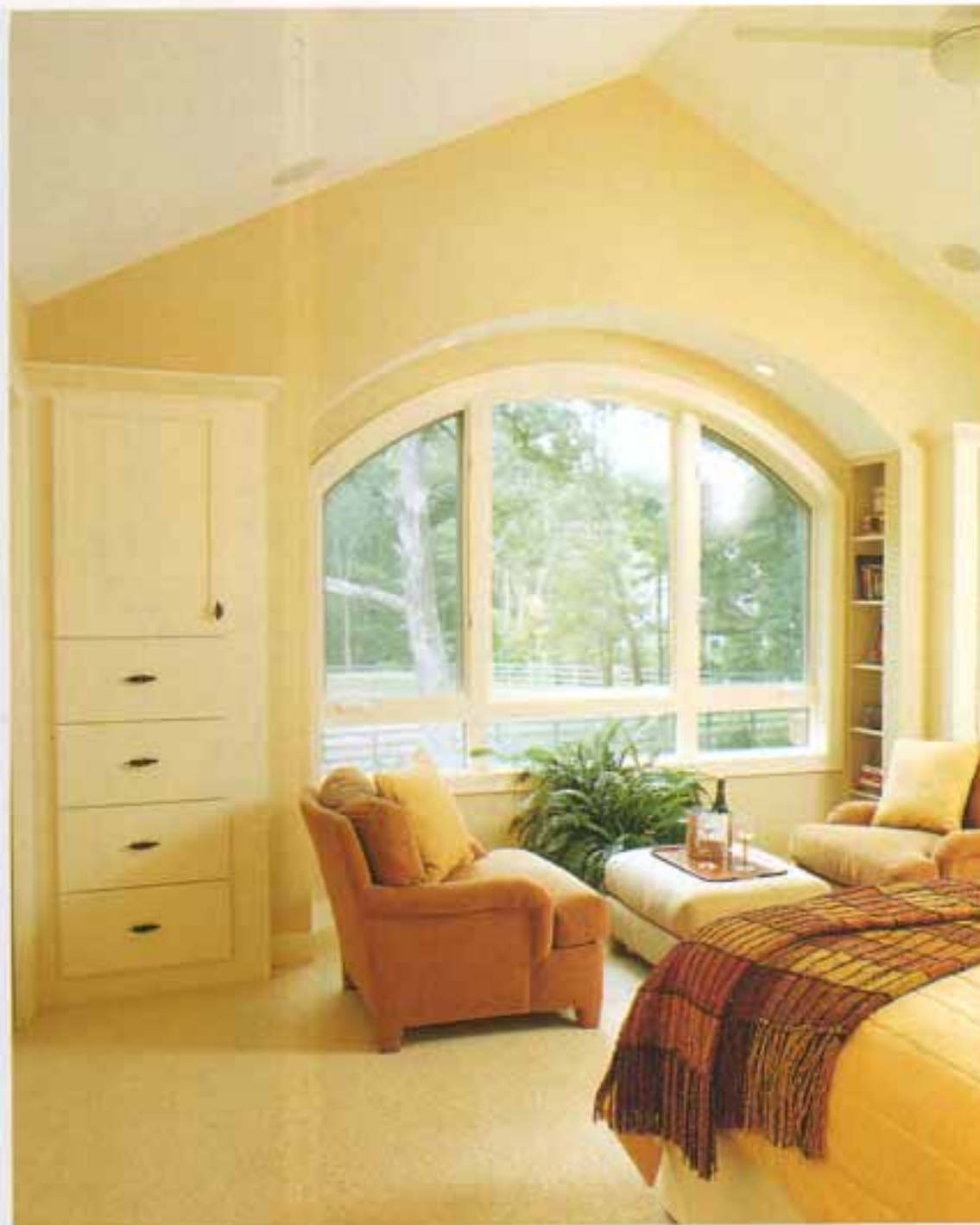
DiMaria enjoys choosing furnishings from Rock Kauffman's retail furniture store, Urban House. In her thirteen years as an interior designer she has focused mainly on new construction, and has recently completed homes in Catamount, Darby Farms, The Preserve, Stonebridge and The Sanctuary.

The colors DiMaria chose to repeat throughout this particular home establish the inviting aura of warmth and friendliness that the homeowners wanted their new home to reflect. Light neutrals enlivened with warm browns, mossy greens and white wood trims go warm with touches of red and other muted hues.

In the kitchen, Baltic brown granite surfaces the countertop areas and expansive island — perfect for gathering guests. The warm browns of the understated Shaker-styled walnut cabinets are repeated in the island's butcher block, the leather seats of the wrought-iron barstools and across the way in the great room's fieldstone fireplace. Underfoot, red birch flooring leads the eye through the open floor plan, from kitchen to great room to dining room and up the stairs to the second level. Practical main floor considerations include a fully-functioning home office, its wide windows overlooking the patio and wooded lot; a cheery laundry room with plenty of natural lighting; and a spacious mud room, complete with storage bench and space for hanging wet clothes.







*Steep dormers and roof lines in the master bedroom give way to perfect nooks for walk-in closets and a charming reading area that looks out through the treetops to the woody front lawn. The warm butterscotch walls wake up with the rising sun and add a glow to each day's beginning.*

Area rugs and upholstered pieces also draw the eye through the main floor, with colors and textures repeated in every way imaginable. The entry opens to a hand-knotted Indian print rug. The kitchen table sets atop a round black rug patterned with large, colorful fruit. Past the white-finished towers that flank the arched opening to the great room, a red patterned rug defines the seating area where comfortable plaid upholstered pieces focus on the fireplace and built-in entertainment center. The upholstery colors are repeated in the dining room chairs, only here they take the pattern of an elegant paisley. The dining suite sets upon a camel, patterned area rug. The color red is again given special emphasis in the form of an antiqued buffet.

Upstairs, the marriage of function and flair enjoys an equally happy union. Steep dormers and roof lines in the master bedroom give way to perfect nooks for walk-in closets and a charming reading area that looks out through the treetops to the woody front lawn. The warm butterscotch walls wake up with the rising sun and add a glow to each day's beginning. Textiles play an important role here, too. The pattern of the upholstered headboard is repeated in pillows tossed upon the comfy twin, chenille-covered chairs. Light camel carpeting weaves the neutral color scheme throughout the upstairs. "His" and "hers" baths reduce the morning mad rush to a minimum.

Her bathroom blends a neutral countertop with honey-stained maple cabinetry. Sconces are set on top of the large mirror that reaches right down to the countertop, eliminating the need for a backsplash. This room's light camel ceramic floor sparkles with topaz glass insets. The wide camel and white cabana-striped wall covering brightens the mood even more. His bathroom features the same cab-



inetry topped with a darker, masculine mottled countertop. Brushed chrome sconces and towel bars repeat the masculine accent. Special order, over-sized ceramic tiles were laid on a diagonal to add interest. The walk-in shower, done with gloss white six-by-eight inch tiles, features the practicality of a bench. A guest room, guest bath and exercise room complete the upstairs. "I like getting people excited by their living environment," DiMaria explains. "My designs reflect who my clients are."

These clients are obviously up on current technologies yet appreciative of home traditions past. They enjoy both elegance and comfort. They hold an appreciation for the natural setting around them. They have accomplished the urbane, with a 21st-century twist.

## The Urbane Home

**Builder:** Diephuis Builders, Inc.  
**Interior Design:** Christine DiMaria of Rock Kauffman Design

**Decorative Hardware:** Modern Hardware  
**Floor Covering:** Carpet One by Johnson  
**Furnishings:** Rock Kauffman's Urban House  
**Kitchen:** Dimensions Kitchen & Bath  
**Landscaping:** Knapp Valley Landscape  
**Lighting:** Ackerman Lighting  
**Security:** E.P.S.